

Products > Pneumatic Actuator > LCD Series

LCD Damper Pneumatic Actuator



LCD Damper Pneumatic Actuator



MISSION

OUR MISSION IS TO CONTINUOUSLY DELIVER VALUE BY

- Manufacturing and supplying products that satisfy the needs of our customers;
- Research & development gives our product value, thus enabling us to offer competitive prices and corporate profitability, which may lead to new investments;
- Constantly achieving operational excellence;
- Conducting our business in a safe, environmentally sustainable and economically optimum manner;
- Employing an innovative and results-oriented team motivated to deliver excellence.

Flexibility, competence, excellent quality/price ratio have been key factors to the success of our company.



LCD Damper Pneumatic Actuator



LCD series cylinders ISO 15552 made by LEAD represent the new generation of ISO cylinders.

Thanks to the usage of innovative materials and a construction philosophy at the forefront, this cylinder stays at the top of the category. Lightness, strength and precision, are the main features of this new LEAD product.

Pneumatic cylinders are designed to work with filtered air without lubrication.

ISO 15552 cylinders, tie rods version.

Suitable for heavy-duty applications. Available with or without magnet, with or without adjustable cushioning, single or through piston rod. Wide range of mounting accessories. Special versions are available. On request compliant with 2014/34/UE ATEX directive.

Key features and benefits

- Non lubrication Special housing and bushing enables self lubrication of piston rod.
- High quality long service life

Hard anodised aluminium cylinder tubes offer a high resistance to corrosion and low internal friction .

- ISO 15552 standard specification

Conforms to ISO 15552 specification enabling worldwide interchangeability.

- Easy to insert reed switch

With four grooves on the tube, proximity and reed sensors can be easily inserted into any position.



LCD Damper Pneumatic Actuator

Technical specifications



Covers: Painted die-casted aluminium

Tube: Anodized aluminium

Seals: Polyurethane – NBR

Guiding bush: Sintered bronze

Piston rod: Chromium coated steel

Tie rods: Ø32-Ø100 AISI303 stainless steel Ø125-Ø320 chromium coated steel

MAX pressure: 10 bar

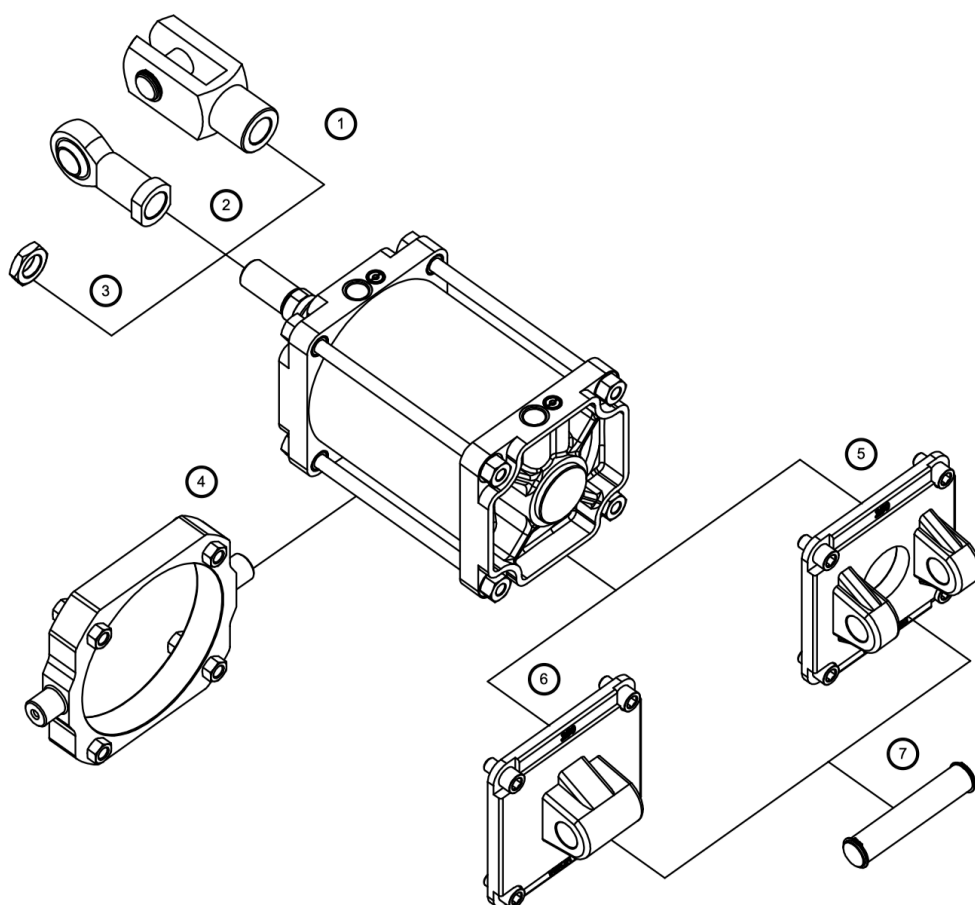
Working temperature: -20°C +80°C with dry air

Working fluid: Filtered and lubricated or not compressed air



LCD Damper Pneumatic Actuator

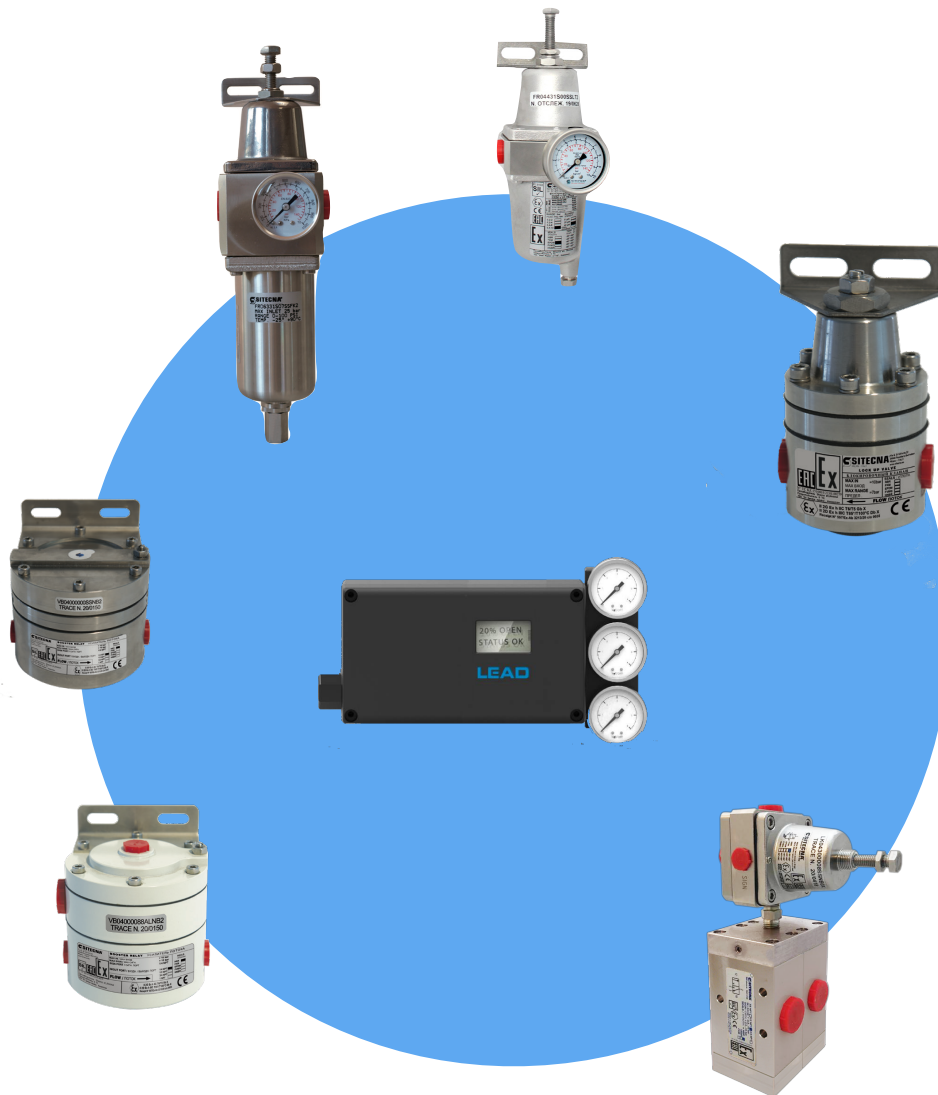
Mounting accessories



1. Clevis
2. Rod end
3. Piston rod nut
4. Intermediate hinge for tie rods cylinders
5. Female hinge
6. Male hinge
7. Pivot for female hinge

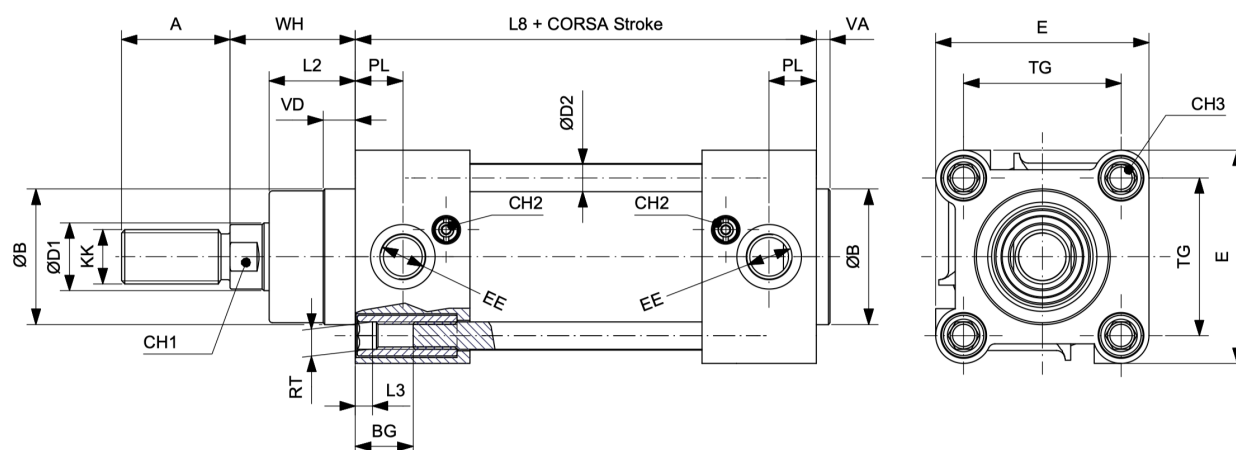
LCD Damper Pneumatic Actuator

Control accessories



LCD Damper Pneumatic Actuator

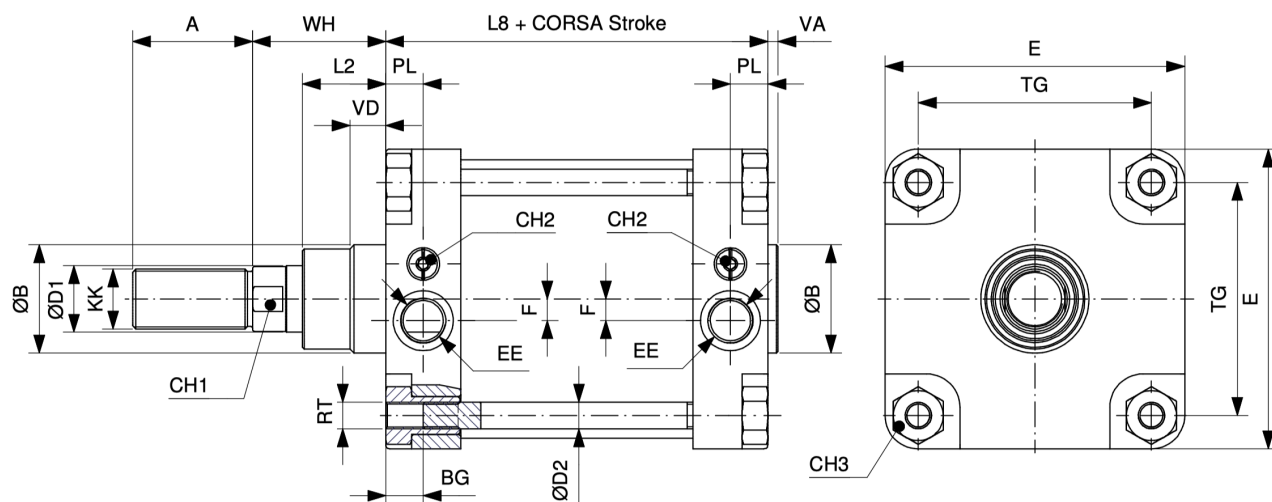
Dimension drawing



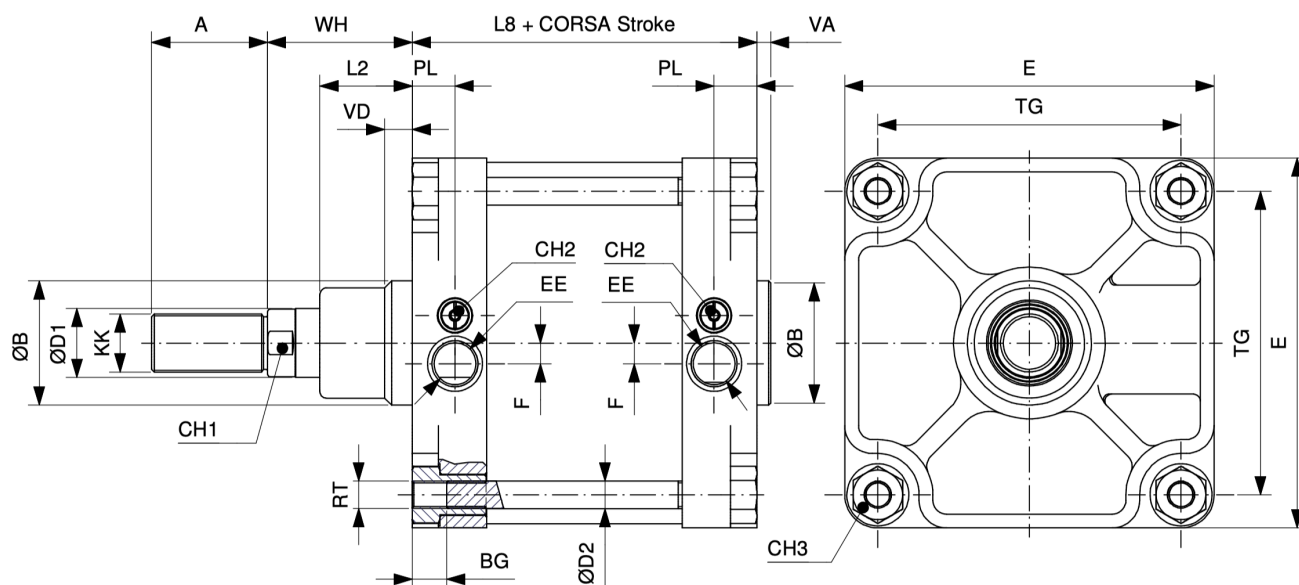
Ø32-125

Ø	ØD1	ØD2	KK	A	ØB	VD	VA	L2	RT	BG	L3	TG	EE	F	PL	WH	L8	E	CH1	CH2	CH3
32	12	6	M10x1.25	22	30	9.5	4	18	M6	16.5	5	32.5	1/8"G		12.5	26	94	47	10	3	6
40	16	6	M12x1.25	24	35	9.5	4	22	M6	16.5	5	38	1/4"G		14	30	105	54	13	3	6
50	20	8	M16x1.5	32	40	9.5	4	25.5	M8	17.5	5	46.5	1/4"G		14	37	106	63	17	3	8
63	20	8	M16x1.5	32	45	9.5	4	25	M8	17.5	5	56.5	3/8"G		16.5	37	121	74	17	3	8
80	25	10	M20x1.5	40	45	10	4	35	M10	17.5	-	72	3/8"G		17	46	128	93.5	22	4	-
100	25	10	M20x1.5	40	55	10	4	38	M10	17.5	-	89	1/2"G		18	51	138	110	22	4	-
125	32	12	M27x2	54	60	11	6	46	M12	20.5	-	110	1/2"G		18	65	160	137.5	27	4	-

LCD Damper Pneumatic Actuator



Ø160-200



Ø250-320

Ø	ØD1	ØD2	KK	A	ØB	VD	VA	L2	RT	BG	L3	TG	EE	F	PL	WH	L8	E	CH1	CH2	CH3
160	40	16	M36X2	72	65	21.5	6	50	M16X2	24	-	140	3/4"G	13	22.5	80	179.5	180	36	6	30
200	40	16	M36X2	72	75	26.5	6	55	M16X2	24	-	175	3/4"G	13	22.5	95	180	220	36	6	30
250	50	20	M42X2	84	90	20	10	67	M20X2.5	25	-	220	1"G	15	31	105	200	268	46	6	36
320	63	25	M48X2	96	110	20	10	82	M24X3	28	-	270	1"G	-	31	120	220	340	55	6	46